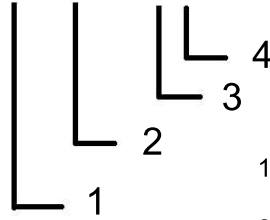


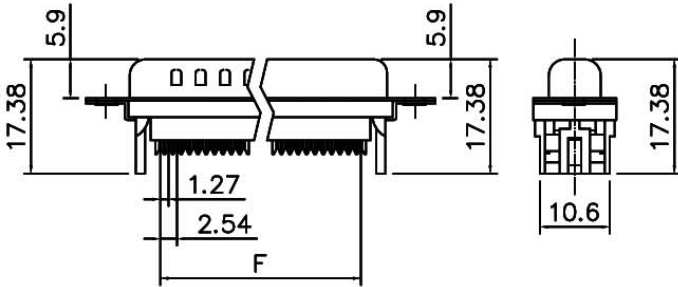
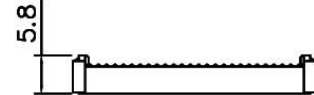
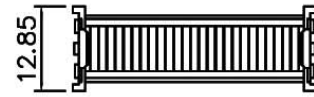
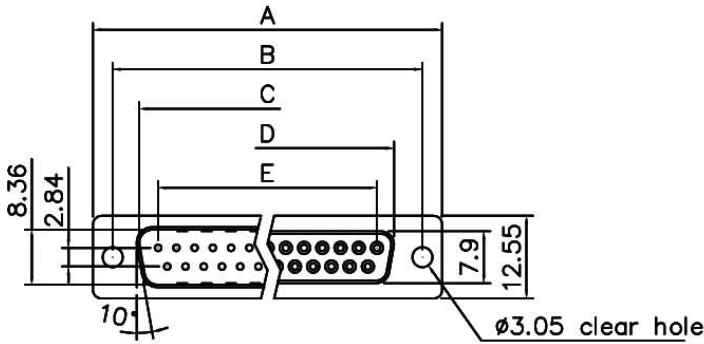
D-Sub connector for flat ribbon cable

Low profile version

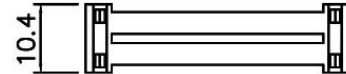
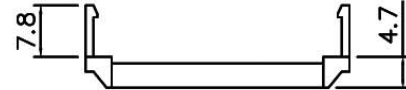
A-DXFXXLPXX-III-R



- 1. M - male  
F - female
- 2. No of contacts  
09/15/25/37
- 3. A - w/440 threaded insert
- 4. S - w/Hex Screws



Without Insulator Support



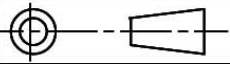
Strain Relief

RoHS COMPLIANT

Dimensions

Positions	A	B	C	D	E	F
9	30.81	24.99	16.92	16.33	11.08	10.16
15	39.14	33.32	25.50	24.66	19.39	17.78
25	53.04	47.04	38.96	38.38	33.24	30.48
37	69.32	63.50	55.42	54.84	49.86	45.72



	A-DXFXXLPXX-III-R All Series		REV
			R
	DRAWN BY: JUSTIN	SCALE: NONE	DATE: 2005-10-07
	CHECKED BY: John Ho	CUSTOMER: C331	PAGE: 1/1
APPROVED BY:	CUSTOMER P/N:		
ALL DIMENSIONS IN mm (UNLESS OTHERWISE SPECIFIED)			